

No. 16



# TAIKO KIKAI INDUSTRIES CO., LTD.

<https://www.taiko-kk.com/en/>

209-1 Shimotabuse, Tabuse-cho, Kumage-gun, Yamaguchi 742-1598 Japan

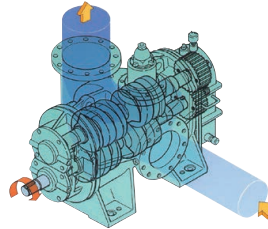
Tel : +81-820-52-3113 / Fax : +81-820-53-1001 / E-mail : business-marine@taiko-kk.com

AHTS	PSV	FPSO	Drill Ship	Semi-sub
▶	▶	▶	▶	▶

## Product

### Two Rotor Screw Pump

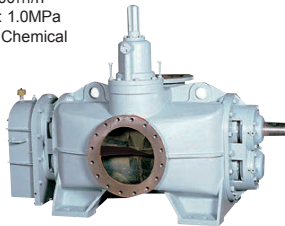
TAIKO's two rotor screw pumps are high-volume pumps that convey liquids through two sets of screws, one left-handed and one right-handed, enclosed in the pump casing. A very small clearance is maintained in the rotation through the use of timing gears. In addition, there is a minimal amount of leakage because the axle penetrates through the intake side. This product is well-suited to the non-lubricants, high-viscosity fluids, and hazardous fluids. It is used as cargo oil pump and chemical cargo pump.



#### Two Rotor Screw Cargo Pump

##### CSL·CSE

- Capacity : 50-1800m<sup>3</sup>/h
- Max. dis. Press. : 1.0MPa
- Application : Oil, Chemical



#### Two Rotor Screw Cargo Pump

##### CSZ

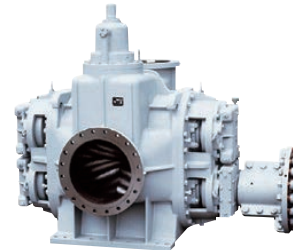
- Capacity : 10-30m<sup>3</sup>/h
- Max. dis. Press. : 1.0MPa
- Application : Oil, Chemi



#### Gear Cargo Pump

##### CGL

- Capacity : 60-1500m<sup>3</sup>/h
- Max. dis. Press. : 1.0MPa
- Application : Oil, Chemical



#### Deepwell Centrifugal Pump

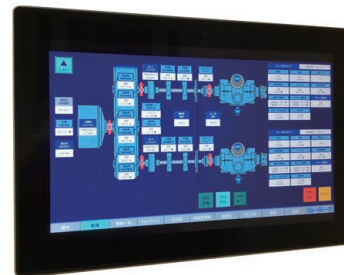
##### MTDPD

- Capacity : 20-500m<sup>3</sup>/h
- Max. dis. Press. : 125m
- Application : Oil, Chemical



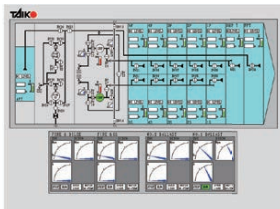
### Cargo-work Assisting Telemonitoring System

- Control, Monitor, Data collection and Sharing with touch-panel display



### Control System

#### Cargo Control System



### Service Network



### Reference

TAIKO have experience for Engine room Pumps for all kind of commercial and offshore vessels.